



AWMAC

AWMAC'S INDUSTRY MAGAZINE



WINTER
2024

www.awmac.com



The year 2024 has proven to be highly successful for AWMAC, marked by a renewed focus on our vision and a steadfast commitment to our members, partners, stakeholders, and staff. AWMAC continues to experience success and growth through the Guarantee and Inspection Service (GIS). Internally, we are evolving as an association, with ongoing efforts to standardize our membership across the country. The collaboration among all chapters has been productive, enhancing both our external and internal communications. As we advocate for the industry, AWMAC is poised for a prosperous future. We remain mindful of our history, as we seek to engage the next generation for our future.

The goal of AWMAC's Industry Magazine (AIM) is to inspire the architectural woodwork industry throughout Canada by showcasing the contributions of AWMAC's members and partners. As we conclude 2024, we present this edition, which serves as a pictorial reflection of the past year and the accomplishments within our chapters. Future editions will continue to feature the same high-quality content, along with engaging and informative articles that celebrate the diversity of this industry, spark new ideas, and foster connections.

AWMAC's 2024 National Partners



AWMAC's 2024 National Supporting Partners





1568 Alberni
Towne Millwork Ltd.

Gold
Overall Quality and Service
Commercial Project,
Service in a Commercial
Project Over 500K

Silver
Quality in a Commercial
Project Over 500K



**Erica Jane
Restaurant**
Beckville Woodcrafts
2022 Ltd.

Gold
Overall Quality and Service
in a Commercial Project
Service in a Commercial
Project Under 500K





Private Residence - Tofino
Cowichan Woodwork Ltd.

Gold
Overall Quality and Service in a Residential Project,
Quality in a Residential Project
Private Residence, Service in a Residential Project



Building Trust. Creating Together.

Providing machinery solutions, service, and support to the millwork industry for over 86 years

PROUD TO BE A SUPPORTING PARTNER OF



Solutions, Service, and Support you can count on.

www.akhurst.com | 1.888.265.4826 | sales@akhurst.com

WHAT IS GIS?

Guarantee your project



STEP 1

Specify **GIS** on your project!



STEP 2

Specify grade, according to AWMAC's Standards.



STEP 3

Project tracking, inspection and reporting begins.



STEP 4

When project is complete a guarantee is issued!

www.awmac.com/gis



GUARANTEE YOUR JOB TODAY!

BUILD TRUST. BUILD QUALITY.

Guarantees architectural woodwork **meets or exceeds** AWMAC's Standards through **expert guidance** and **inspections** by **qualified industry specialists**.

For over **50 years**, AWMAC has proven to be the one **National voice** of the Architectural Woodwork Industry in **Canada**.



HARDWOODS®

Materials That Inspire

Discover why we're North America's
trusted leader in architectural building products



DRAGON PLY.
PREMIUM HARDWOOD PLYWOOD

Echo  Wood®
RECONSTITUTED WOOD VENEERS

 **Baltic Birch**
HARDWOOD PLYWOOD

 **TAFISA®**

 **EGGER**

SHINNOKI®
prefinished wood panels

QUERKUS
finest oak collection



Proudly Distribute Quality Products

HARDWOODS®

Materials That Inspire

844-365-6995
hardwoods-inc.com
hardwoods.online

Specification Support By

Design one Source®

Where Inspiration and Design Meet Supply

866-599-1433
designonesource.com



Visit us at www.hardwoods-inc.com
to explore our product portfolio



Leduc Radiology
Milltech Millwork
Outstanding Millwork
\$250k to \$500k



TRESPA®
TOPLAB®

With durability and chemical resistance, Trespa® TopLab® panels are built for healthcare and laboratory environments.
[Formica.com/TopLabPanels](https://www.formica.com/TopLabPanels)



WHERE OPPORTUNITIES ARE FOUND

Woodworkingjobs.ca is a hub for employers and employees in the woodworking industry. This tool streamlines the process when you are trying to right-fit your company.

Visit to post a job, or to search for your next opportunity.



2025

AWMAC NATIONAL CONVENTION



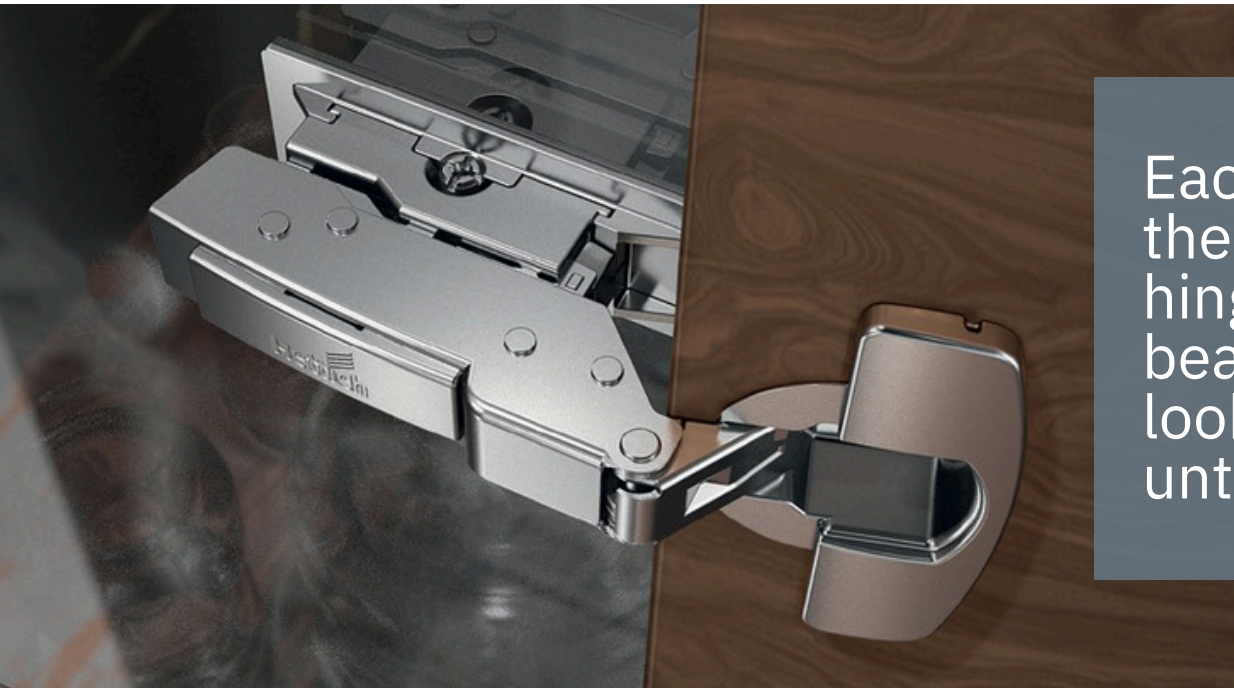
BUILD NETWORKS. BUILD KNOWLEDGE.

June 5 - 7, 2025 | Saskatoon, Saskatchewan

www.awmac.com/convention

Sensys for Glass Cabinets, Displays and Showcases

THE ART OF THE POSSIBLE



Each part of the Sensys hinge is beautiful to look at, a jewel unto itself.

As a cabinet designer and maker, one needs creative license to envision what can be... to take sketches and bring them to life. To create something out of nothing is the art of the possible. And perhaps no material is more inspiring and challenging than glass.

For small spaces, glass brings in not only light, but openness, a sense of freedom, expanse and airiness. And this is where glass cabinetry is so remarkable. It allows displayed items to become a showcase – a focal point of beauty. Magical. Ethereal.

Sensys hinges by Hettich, a leading German company in furniture fixtures known for its exceptional quality and excellence in engineering, are ideal for glass applications. Part of the award-winning Sensys family of hinges, they are designed specifically for glass cabinets, showcases, and displays. All Sensys hinges feature the soft-close mechanism, and have a wide, automatically closing angle of 35 degrees,

And the integrated Silent System ensures that delicate glass doors close gently and reliably, without disturbing the contents in cabinets, making it an ideal design choice for high-end retail showcases or luxury display units. Sensys hinges have shallow depths, ideal for sleek and thin glass fronts, giving designers more freedom in their final creation. With an elegant cover cap for both the arm and hinge, each part of Sensys is beautiful to look at, a jewel unto itself. With the slender adhesive surfaces, Sensys is quick and easy to install on any glass surface. The strong bonding system also lets one combine cabinet fronts and bodies in different materials, including wood. Temperature stable, from 5°C to 40°C, the Sensys hinge for glass is an elegant and reliable choice for cooler rooms, such as a wine cellar. Or used in a warmer setting, such as a bathroom for luxurious glass cabinets. Whatever the creation with glass - in the home, office, or retail setting - Sensys, the benchmark of hinges, delivers quality, flexibility, and design inspiration.

Learn more at www.hettich.com



ASSOCIATION BENEFITS PROGRAM



Introducing the Association Benefits Program, specifically designed to cater to the distinct requirements of you, our **AWMAC Member!**

The program offers **exceptional benefits** and top-tier services to your employees, at **competitive prices.**



RETIREMENT PLANS

Access retirement planning solutions that include **flexible plans** and **preferred pricing** on a broad range of investment funds. Program services provide simple online enrolment, education, and support from industry experts to **help your employees plan and save for retirement.**

EMPLOYEE BENEFITS

Regardless of the size of your business, as an **AWMAC Member**, you have access to a range of products and services, that include **insurance, group benefits**, and voluntary benefits plans **customized to meet your needs.**



877-410-7200 • awmac@paceconsulting.com • www.paceconsulting.com



Advantage Financial Cabinet Expressions Ltd.

Manufacturing Award - Small Commercial (projects under \$200k)
Millwork Designed by: **Alvin Reinhard Fritz Architect Inc.**
Project Managed by: **Ward Bros. Construction**



Dorian Hotel Executive Millwork Inc.

Manufacturing Award - Large Commercial (projects over \$200k)
Millwork Designed by: **Chil Interior Design**
Project Managed by: **EllisDon**



Canmore Private Residence
Bec Woodcraft

Manufacturing Award - Residential
Millwork Designed by:
Sticks & Stones Design Group Inc.
Project Managed by:
Woodlands Mountain Homes

tiomos
m-series.

THREE VERSATILE HINGES
FOR EVEN THE MOST
DEMANDING DOOR
APPLICATIONS.

G*GRASS®



With the Tiomos M-Series, GRASS offers perfect movement for slim doors of 6mm and upwards, for glass and mirror doors as well as for rebated doors and doors with mitered application. All with or without soft-close damping.



grass.eu

2024 National AWMAC Partner

CARVING A NEW PATH IN HARDWARE SOLUTIONS

With a vast range of innovative products ranging from sleek decorative hardware to premium quality panels to versatile kitchen accessories, Richelieu is pleased to showcase its latest collection of cutting-edge hardware solutions.



MAGIC CORNER FIORE II



North American Architectural Woodwork Standards Manual



BUILD TRUST. BUILD QUALITY.

A comprehensive set of **standards** that defines **material and workmanship requirements** for the fabrication and installation of **architectural woodwork.**

For over **50 years**, AWMAC has proven to be the one **National voice** of the Architectural Woodwork Industry in **Canada.**



DOWNLOAD YOUR NAAWS MANUAL TODAY!



AWMAC's **North American Architectural Woodwork Standards (NAAWS)** is the proven industry standards manual that architects, specification writers, and millwork firms know and trust. All casework joinery methods listed within the NAAWS were tested and confirmed to meet or exceed the NAAWS performance requirements.



**Confidential Pension
Services Offices**
Arcadis Architects (Canada),
G&P Millwork and DPI

The recent renovation of Confidential Pension Services Offices incorporated custom white oak millwork to enhance the space's functionality and design. By working closely together, **Arcadis**, **G&P Millwork**, and **DPI** successfully transformed the office using high-quality materials and custom craftsmanship. The result is an office that blends modern functionality with the warmth of natural materials, creating a welcoming space for employees.

HARDWOODS®

Materials That Inspire

Discover why we're North America's trusted leader in architectural building products



DRAGON PLY.
PREMIUM HARDWOOD PLYWOOD

Echo  Wood®
RECONSTITUTED WOOD VENEERS

 **Baltic Birch**
HARDWOOD PLYWOOD

 **TAFISA®**

 **EGGER**

SHINNOKI®
prefinished wood panels

 **QUERKUS**
finest oak collection



Proudly Distribute Quality Products

HARDWOODS®

Materials That Inspire

844-365-6995
hardwoods-inc.com
hardwoods.online

Specification Support By

Design one Source®

Where Inspiration and Design Meet Supply

866-599-1433
designonesource.com



Visit us at www.hardwoods-inc.com
to explore our product portfolio



Brix Cocktail Bar, Brix Wine Bar and Brix Coffee Shop
Wildwood Cabinets, The Address Interiors

Photo Credit: Christine O'Brien



The Charlottetown Library Learning Centre
Nova Wood Products, Nine Yard Studios

Gold
Commercial Design





Moxy Hotel
Rodney Enterprises Ltd., By and Large
Designs.
Photo Credit: Aaron McKenzie Fraser

SOME SEE
WOOD...



WE SEE
PURPOSE

We are proud to serve as a leading distributor and importer of hardwood lumber and panel products, including FSC® Certified (FSC-C015736), LEED v4 eligible, and TSCA VI compliant wood products.



www.hettich.com

📷 [hettich_canada](https://www.instagram.com/hettich_canada)

The Sensys hinge. The *sense* of luxury.

Sensys hinge by Hettich delivers exceptional elegance and quality, ideal for glass cabinets, displays, and showcases. With a 35 degree closing angle, Sensys closes quicker than any other hinge on the market, silently and effortlessly.



Sensys, the
benchmark of
hinges.

**Build with
Confidence.
Build with
Hettich.**

Technik für Möbel


Hettich

2025 AWMAC Strategic Goals

VISION: TO BE THE ARCHITECTURAL WOODWORK INDUSTRY AUTHORITY IN CANADA

MISSION

To develop and promote the use of AWMAC's STANDARDS for the manufacturing and installation of architectural woodwork and promote assurance of adherence to those quality standards and sustainable practices in the woodwork industry.

VALUES



Quality Standardized Quality and Assurance.



Education Promotion and Educational Development.



Sustainability Stewardship of Human Resources and Financial Resources.



Collaboration Communication and Partnering with Stakeholders and Industry.

STRATEGIC THEMES

ONE

GIS Growth: Over the next 1 to 3 years, the GIS Program will be the central focus and primary function of AWMAC. All other objectives and resources will be aligned to support GIS

TWO

Education: AWMAC National will promote the Architectural Woodworking industry by creating a Chapter toolkit, engaging educational institutions, and collaborating with expert members

THREE

Lobbying: AWMAC National will pursue strategic lobbying efforts with all government levels to address industry funding, reputation, and inclusion of AWMAC Standards in building codes

FOUR

Membership: AWMAC National will enhance member satisfaction by identifying member needs and wants, offering additional value-added benefits, and maintaining consistent communication

FIVE

Governance: AWMAC National will revise and distribute our foundational governance documents to foster unity among Chapters from coast to coast



ARCHITECTURAL WOODWORK
MANUFACTURERS ASSOCIATION
OF CANADA

ASSOCIATION DES MANUFACTURIERS
DE MENUISERIE ARCHITECTURALE
DU CANADA

LEVEL UP ANY SURFACE

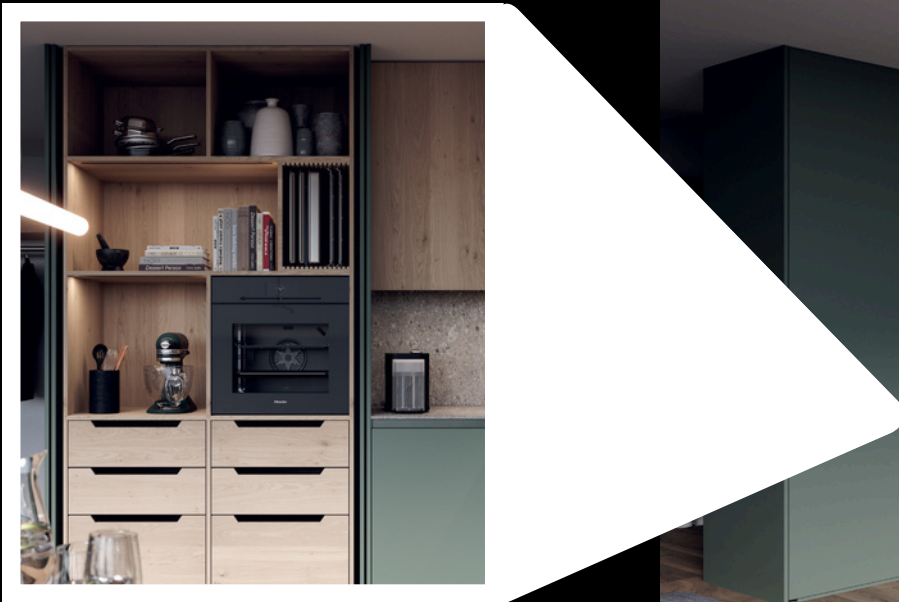
WITH NATURE+

Our Italian designed Thermo-Structured Surface offers unbeatable durability and versatility while enhancing any style of decor. Resistant to scratching and sun fading, **Nature+** has endless application possibilities and comes in twelve distinguished textures featuring natural wood grains and abstract motifs.



Richelieu
YOUR HARDWARE CHAMPION

TALK TO AN EXPERT
media@richelieu.com
1-800-619-5446



HAWA CONCEPTA III



IT'S ALL IN THE DETAILS

Richelieu will also offers the enhanced HAWA CONCEPTA III system for single pivot and slide-in pocket cabinet wood doors. The system is perfect for commercial and residential applications in kitchens, pantries, closets, laundry rooms, meeting rooms, food and beverage centers and equipment storage. There are two versions available: the PUSH to open version for applications without handles or the PULL version for applications with pull handles. With floor-to-ceiling designs, high boards, or wall units with two, three or four doors possible, the HAWA CONCEPTA III provides unlimited creative freedom for buyers and their clients.

Richelieu
YOUR HARDWARE CHAMPION



2025 AWMAC PARTNER PROGRAM

Partner Benefits	National Partner	National Supporting Partner	National Supporting Partner	National Supporting Partner
2025 membership in AWMAC National + all 8 AWMAC Chapters	✓			
National webinar, hosted by you!	✓	✓		
Your company logo and website on AWMAC webpages	All AWMAC webpages	All AWMAC webpages	AWMAC Chapter Member webpages	AWMAC Chapter Member webpages
Your company profile in AWMAC's Partner Directory	✓	✓	✓	✓
Content in AWMAC's Industry Magazine (AIM) (two issues)	One full-page in each issue	One half-page in each issue	One half-page in each issue	
AWMAC's 2025 Partner Logo	✓	✓	✓	✓
Discounted \$500 2025 AWMAC National Convention tradeshow booth (regular \$2,000)	✓	✓	✓	✓
Exclusive 2025 AWMAC National Convention sponsorship opportunities	✓	✓	✓	✓
Social media engagement	✓	✓		
Investment	\$20,000	\$15,000	\$10,000	\$5,000

You'll receive recognition from January - December as AWMAC's Partner; you'll have access to AWMAC's 5,000 contacts, and mentions and logo placement on...

- Website
- AGM Materials
- Annual Report
- Newsletters
- Social Media



AWMAC

BUILD NETWORKS. BUILD KNOWLEDGE.
2025 NATIONAL CONVENTION



**BUILD
NETWORKS.
BUILD
KNOWLEDGE.**

The success of AWMAC is fundamentally dependent on maintaining continuous engagement with members and supporters throughout Canada. The theme for the 2025 AWMAC National Convention, "Build Networks, Build Knowledge," emphasizes the importance of collaboration and education as we move the industry forward.

We welcome you to join us in Saskatoon, Saskatchewan June 5 – 7, 2025!

www.awmac.com/convention